



PRODUCT DATA SHEET

Multi-use Parcel Shipper ATS7

Frozen (below -20°C)



Akuratempp LLC

170 Bradley Branch Rd., Suite #11, Arden, NC, 28704

Email: info@akuratempp.com • Tel: 828-708-2510 • www.akuratempp.com

The **Akuratemp® ATS7** Pre-Validated Parcel Shippers utilize Phase Change Technology as a safe alternative to dry ice for transporting frozen biological products. These shippers feature a holdover time of 24 to 48 hours and are tested to provide stable repeatable performance.

Akuratemp® ATS7 parcel shipper is integrated with an IoT enabled TagBox™ sensor that provides real-time temperature monitoring, geo-location tracking, and smart notification capability when paired with a wifi gateway via a cloud-based monitoring platform. The platform includes a proprietary parcel shipper asset management system.

ATS7 multi-use parcel shipping kits are available for purchase and for lease.



Minimizes temperature related product rejections



Repeatable temperature stability implemented with phase change technology.



Tested to ISTA 7D summer and winter profiles



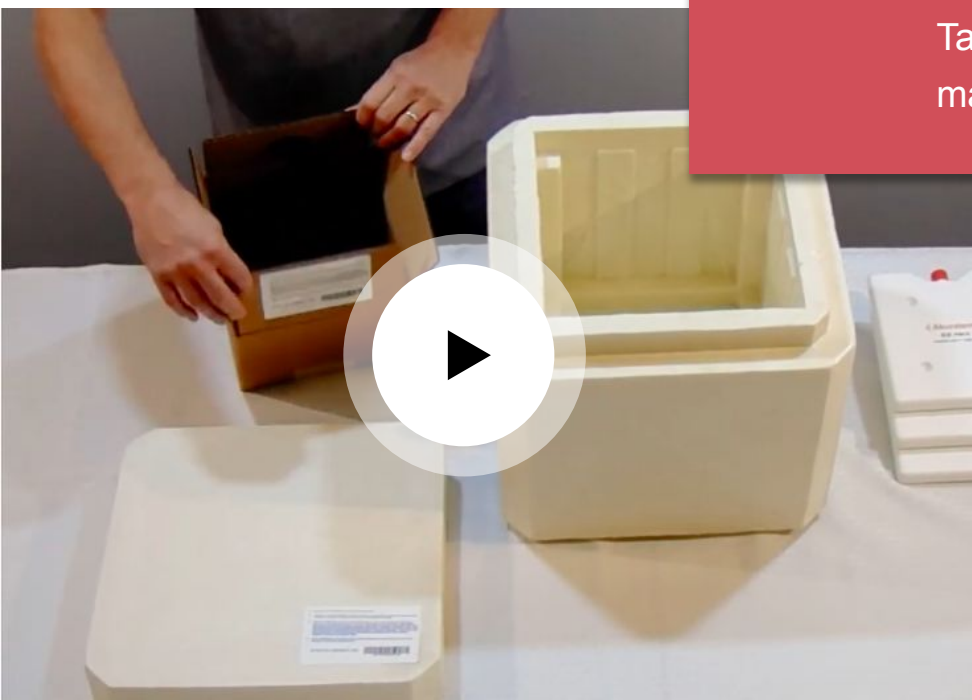
Establish temperature compliance with end-to-end traceability



Integrated delivery of early warning signals and excursion alarms



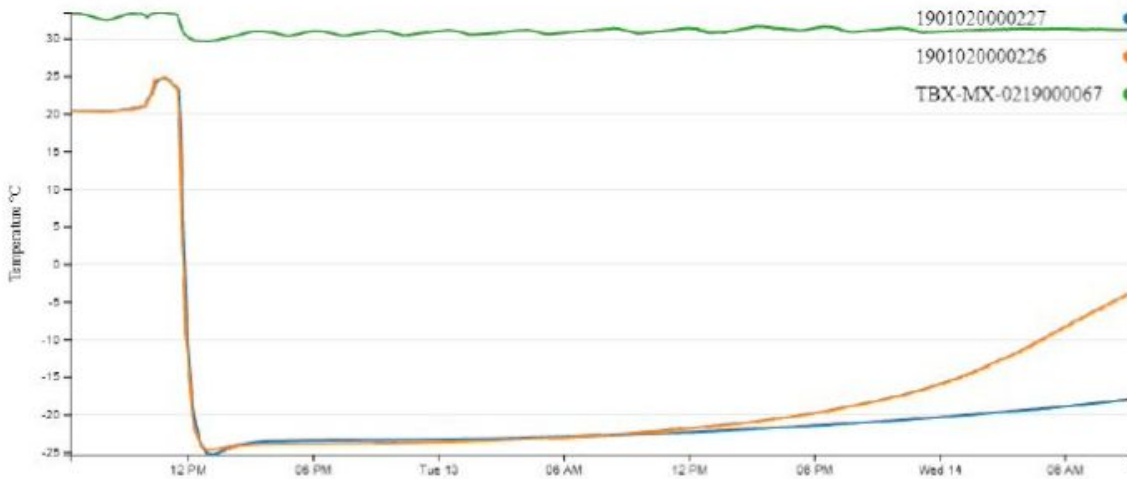
Manage inventory between multiple locations, temperature compliance, and chain of custody on TagBox™ cloud-based asset management system



Features:

1. High insulation with uniform thermal distribution
2. Reusable PCM, a safe alternative to dry ice
3. Assurance of readiness before pack-out
4. End-to-end traceability with IoT enabled technology
5. Validated to worst case scenario
6. Online inventory management

ATS7 - Frozen Product Validation



Organge: ATS7S Frozen - 30hrs
 Blue: ATS7M FROzen - 36hrs
 Green: Chamber: +30C

Specifications

Model Number	ATS7S-26NB8-30	ATS7M-26NB10-37
Application	Frozen	Frozen
Temperature Control Range	-25°C to -20°C	-25°C to -20°C
Payload Space	8 x 8 x 8"	10 x 10 x 10"
Outer Dimensions	15 x 15 x 15"	18 x 18 x 18"
Holdover Time	24 hrs	36 Hrs
Tare Weight	25 lbs	40 lbs